

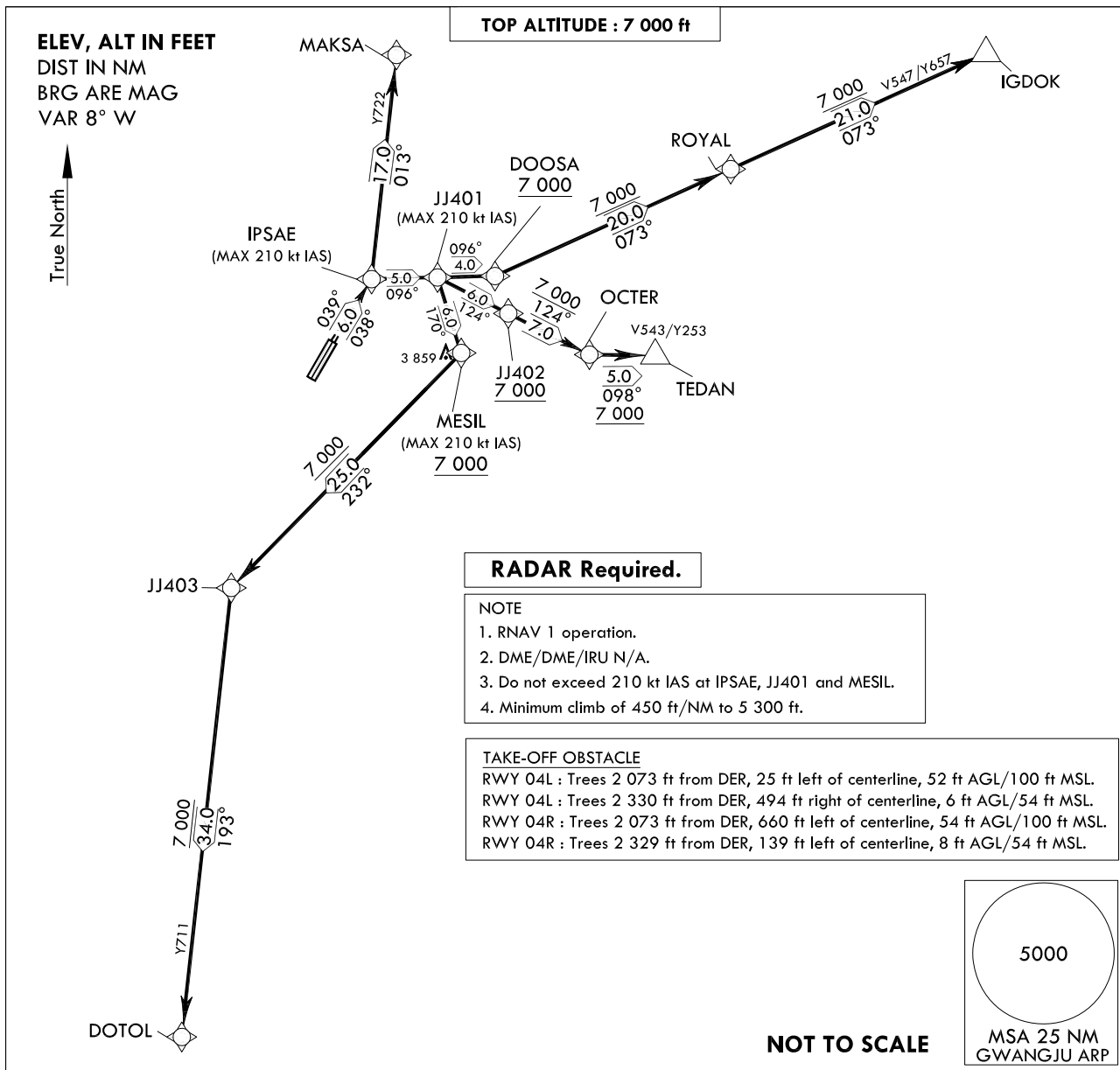
**STANDARD DEPARTURE CHART  
INSTRUMENT (SID)**

TRANSITION ALT 14 000  
TRANSITION LVL FL 140

GWANGJU DEP 124.0, 124.7  
347.2  
GWANGJU TWR 118.05  
254.6

**GWANGJU/Gwangju(RKJJ)**  
**RWY 04L/R**  
**RNAV IPSAE 1**

Note : Departure under U.S. TERPS.



**DEPARTURE ROUTE DESCRIPTION**

TAKE-OFF RWY 04R : Climb on course 038° to IPSAE, thence.....

TAKE-OFF RWY 04L : Climb on course 039° to IPSAE, thence.....

.....transition routes and expect further clearance to filed altitude after departure.

MAKSA Transition : From IPSAE track 013° to MAKSA.

IGDOK Transition : From IPSAE track 096° to JJ401 and track 096° to DOOSA at or above 7 000 ft,  
then track 073° to ROYAL and track 073° to IGDOK.

TEDAN Transition : From IPSAE track 096° to JJ401 and track 124° to JJ402 at or above 7 000 ft,  
then track 124° to OCTER and track 098° to TEDAN.

DOTOL Transition : From IPSAE track 096° to JJ401 and track 170° to MESIL at or above 7 000 ft,  
then track 232° to JJ403 and track 193° to DOTOL.

GWANGJU/Gwangju(RKJJ)  
RWY 04L/R  
RNAV IP5AE 1

## AERONAUTICAL DATA TABULATION

## Standard Instrument Departure Procedure Coding Tables

## RNAV IP5AE 1 - MAKSA Transition

Serial Number	Path Descriptor	Waypoint Identifier	Fly-over	Course/Track °M(°T)	Distance (NM)	Turn direction	Altitude (ft)	Speed (kt)	Coordinates	VPA/ RDH	Navigation specification	Remarks
001	CF	IPSAE	-	04L-039 (031.0) 04R-038 (029.9)	5.7	-	-	-210	35°13'07.6"N 126°52'30.1"E	-	RNAV 1	-
002	TF	MAKSA	-	013 (005.1)	17.1	-	-	-	35°30'11.3"N 126°54'22.0"E	-	RNAV 1	-

## RNAV IP5AE 1 - IGDKK Transition

Serial Number	Path Descriptor	Waypoint Identifier	Fly-over	Course/Track °M(°T)	Distance (NM)	Turn direction	Altitude (ft)	Speed (kt)	Coordinates	VPA/ RDH	Navigation specification	Remarks
001	CF	IPSAE	-	04L-039 (031.0) 04R-038 (029.9)	5.7	-	-	-210	35°13'07.6"N 126°52'30.1"E	-	RNAV 1	-
002	TF	JJ401	-	096 (087.4)	5.0	-	-	-210	35°13'21.1"N 126°58'35.9"E	-	RNAV 1	-
003	TF	DOOSA	-	096 (087.5)	4.4	-	+7 000	-	35°13'32.6"N 127°03'54.5"E	-	RNAV 1	-
004	TF	ROYAL	-	073 (064.5)	19.6	-	+7 000	-	35°21'59.1"N 127°25'33.7"E	-	RNAV 1	-
005	TF	IGDKK	-	073 (064.7)	21.3	-	+7 000	-	35°31'03.6"N 127°49'06.6"E	-	RNAV 1	-

## RNAV IP5AE 1 - TEDAN Transition

Serial Number	Path Descriptor	Waypoint Identifier	Fly-over	Course/Track °M(°T)	Distance (NM)	Turn direction	Altitude (ft)	Speed (kt)	Coordinates	VPA/ RDH	Navigation specification	Remarks
001	CF	IPSAE	-	04L-039 (031.0) 04R-038 (029.9)	5.7	-	-	-210	35°13'07.6"N 126°52'30.1"E	-	RNAV 1	-
002	TF	JJ401	-	096 (087.4)	5.0	-	-	-210	35°13'21.1"N 126°58'35.9"E	-	RNAV 1	-
003	TF	JJ402	-	124 (115.8)	6.0	-	+7 000	-	35°10'43.6"N 127°05'12.9"E	-	RNAV 1	-
004	TF	OCTER	-	124 (115.8)	6.9	-	+7 000	-	35°07'43.0"N 127°12'46.3"E	-	RNAV 1	-
005	TF	TEDAN	-	098 (089.8)	5.0	-	+7 000	-	35°07'43.8"N 127°18'52.1"E	-	RNAV 1	-

## RNAV IP5AE 1 - DOTOL Transition

Serial Number	Path Descriptor	Waypoint Identifier	Fly-over	Course/Track °M(°T)	Distance (NM)	Turn direction	Altitude (ft)	Speed (kt)	Coordinates	VPA/ RDH	Navigation specification	Remarks
001	CF	IPSAE	-	04L-039 (031.0) 04R-038 (029.9)	5.7	-	-	-210	35°13'07.6"N 126°52'30.1"E	-	RNAV 1	-
002	TF	JJ401	-	096 (087.4)	5.0	-	-	-210	35°13'21.1"N 126°58'35.9"E	-	RNAV 1	-
003	TF	MESIL	-	170 (161.5)	6.0	-	+7 000	-210	35°07'39.2"N 127°00'55.4"E	-	RNAV 1	-
004	TF	JJ403	-	232 (223.2)	24.9	-	+7 000	-	34°49'26.5"N 126°40'11.4"E	-	RNAV 1	-
005	TF	DOTOL	-	193 (185.0)	34.3	-	+7 000	-	34°15'15.4"N 126°36'36.6"E	-	RNAV 1	-

Change : Information of ALT/speed restrictions for MAKSA, DOOSA, JJ402 and MESIL.

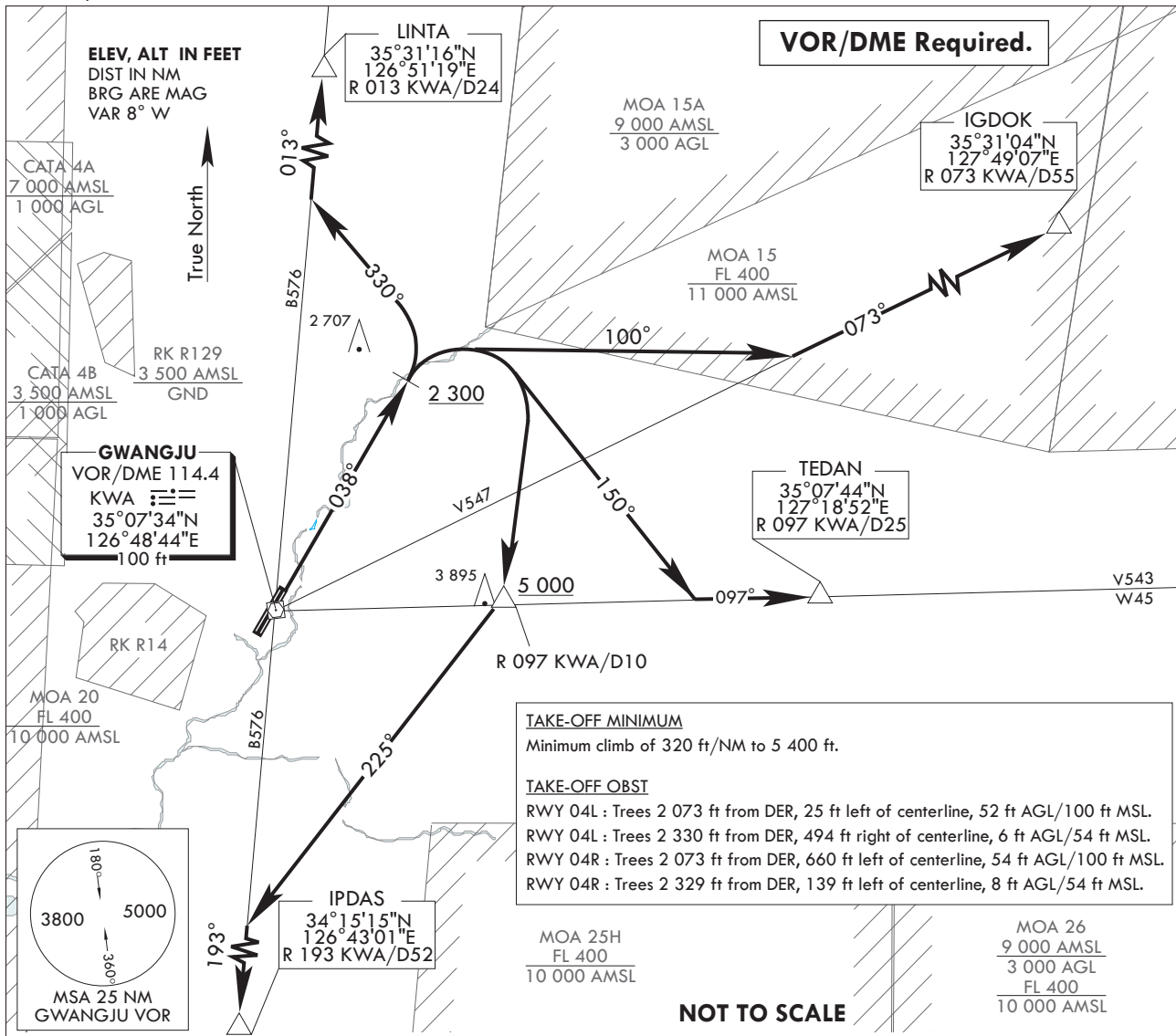
**STANDARD DEPARTURE CHART  
INSTRUMENT (SID)**

TRANSITION ALT 14 000  
TRANSITION LVL FL 140

GWANGJU DEP 124.0, 124.7  
347.2  
GWANGJU TWR 118.05  
254.6

**GWANGJU/Gwangju(RKJJ)**  
**RWY 04L/R**  
**GWANGJU 3**

Note : Departure under U.S. TERPS.



**DEPARTURE ROUTE DESCRIPTION**

TAKE-OFF RWY 04R/L : Climb HDG 038° to 2 300 ft, then.....  
..... Climb to assigned or specified altitude via (the following transition routes).

LINTA transition : Left turn HDG 330° to intercept R 013 KWA and R 013 KWA to LINTA.

IGDOK transition : Right turn HDG 100° to intercept R 073 KWA and R 073 KWA to IGDOK.

TEDAN transition : Right turn HDG 150° to intercept R 097 KWA and R 097 KWA to TEDAN.

IPDAS transition : Right turn direct to R 097 KWA/D10 at or above 5 000 ft,  
then right turn HDG 225° to intercept R 193 KWA and R 193 KWA to IPDAS.

**INTENTIONALLY**

**LEFT**

**BLANK**

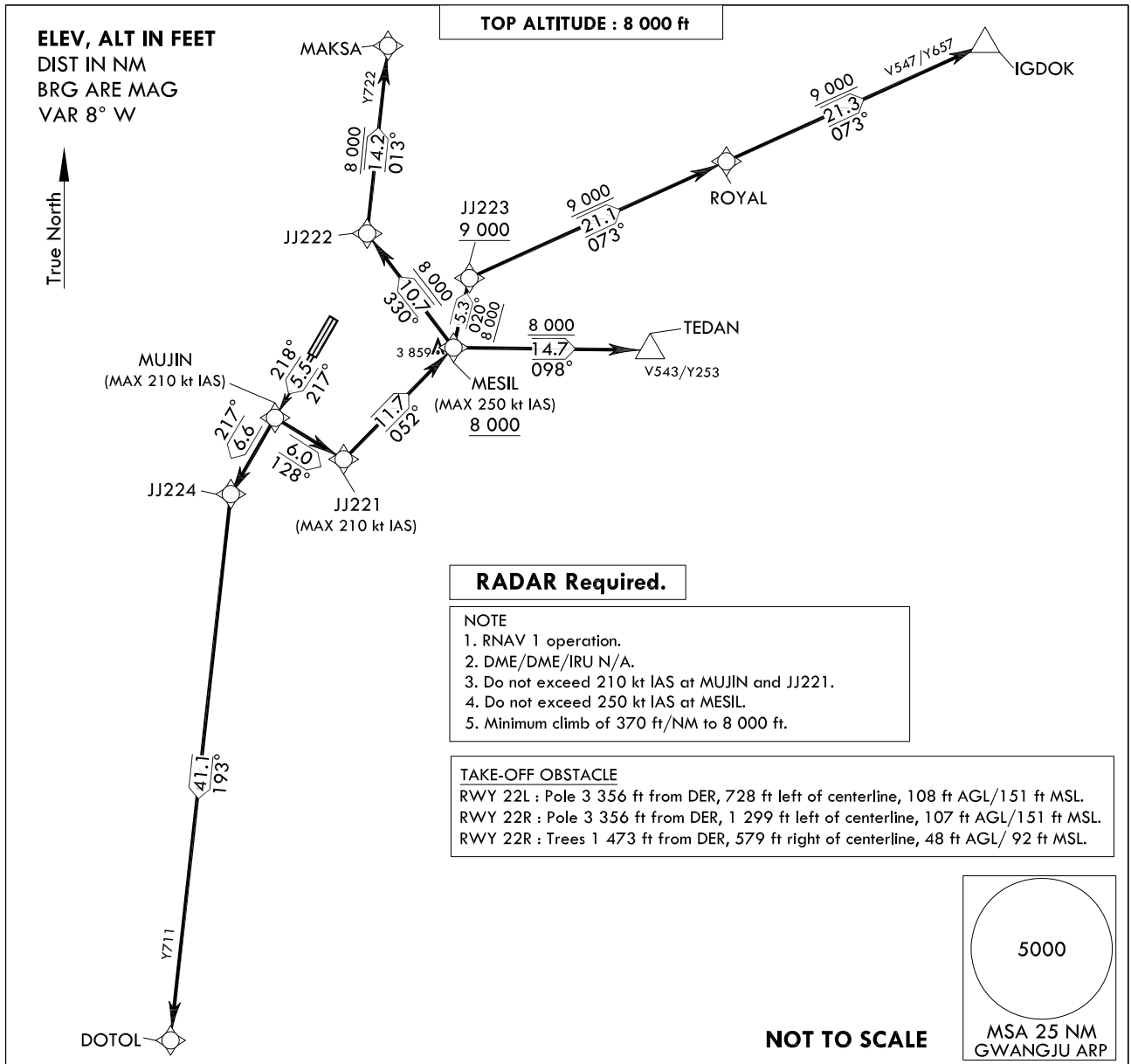
**STANDARD DEPARTURE CHART  
INSTRUMENT (SID)**

TRANSITION ALT 14 000  
TRANSITION LVL FL 140

GWANGJU DEP 124.0, 124.7  
347.2  
GWANGJU TWR 118.05  
254.6

**GWANGJU/Gwangju(RKJJ)**  
**RWY 22L/R**  
**RNAV MUJIN 1**

Note : Departure under U.S. TERPS.



**DEPARTURE ROUTE DESCRIPTION**

TAKE-OFF RWY 22R : Climb on course 217° to MUJIN, thence.....

TAKE-OFF RWY 22L : Climb on course 218° to MUJIN, thence.....

.....transition routes and expect further clearance to filed altitude after departure.

DOTOL Transition : From MUJIN track 217° to JJ224 and track 193° to DOTOL.

TEDAN Transition : From MUJIN track 128° to JJ221 and track 052° to MESIL at or above 8 000 ft,  
then track 098° to TEDAN.

IGDOK Transition : From MUJIN track 128° to JJ221 and track 052° to MESIL at or above 8 000 ft,  
then track 020° to JJ223 and track 073° to ROYAL and track 073° to IGDOK.

MAKSA Transition : From MUJIN track 128° to JJ221 and track 052° to MESIL at or above 8 000 ft,  
then track 330° to JJ222 and track 013° to MAKSA.

Change : Amended phrase(IPSAE → MUJIN).

GWANGJU/Gwangju(RKJJ)  
RWY 22L/R  
RNAV MUJIN 1

## AERONAUTICAL DATA TABULATION

## Standard Instrument Departure Procedure Coding Tables

## RNAV MUJIN 1 - DOTOL Transition

Serial Number	Path Descriptor	Waypoint Identifier	Fly-over	Course/Track °M(°T)	Distance (NM)	Turn direction	Altitude (ft)	Speed (kt)	Coordinates	VPA/ RDH	Navigation specification	Remarks
001	CF	MUJIN	-	22L-218 (209.9) 22R-217 (208.8)	5.5	-	-	-210	35°02'06.6"N 126°44'47.0"E	-	RNAV 1	-
002	TF	JJ224	-	217 (208.8)	6.6	-	-	-	34°56'18.9"N 126°40'54.9"E	-	RNAV 1	-
003	TF	DOTOL	-	193 (185.0)	41.1	-	-	-	34°15'15.4"N 126°36'36.6"E	-	RNAV 1	-

## RNAV MUJIN 1 - TEDAN Transition

Serial Number	Path Descriptor	Waypoint Identifier	Fly-over	Course/Track °M(°T)	Distance (NM)	Turn direction	Altitude (ft)	Speed (kt)	Coordinates	VPA/ RDH	Navigation specification	Remarks
001	CF	MUJIN	-	22L-218 (209.9) 22R-217 (208.8)	5.5	-	-	-210	35°02'06.6"N 126°44'47.0"E	-	RNAV 1	-
002	TF	JJ221	-	128 (119.9)	6.0	-	-	-210	34°59'06.8"N 126°51'06.8"E	-	RNAV 1	-
003	TF	MESIL	-	052 (043.3)	11.7	-	+8 000	-250	35°07'39.2"N 127°00'55.4"E	-	RNAV 1	-
004	TF	TEDAN	-	098 (089.6)	14.7	-	+8 000	-	35°07'43.8"N 127°18'52.1"E	-	RNAV 1	-

## RNAV MUJIN 1 - IGDKOK Transition

Serial Number	Path Descriptor	Waypoint Identifier	Fly-over	Course/Track °M(°T)	Distance (NM)	Turn direction	Altitude (ft)	Speed (kt)	Coordinates	VPA/ RDH	Navigation specification	Remarks
001	CF	MUJIN	-	22L-218 (209.9) 22R-217 (208.8)	5.5	-	-	-210	35°02'06.6"N 126°44'47.0"E	-	RNAV 1	-
002	TF	JJ221	-	128 (119.9)	6.0	-	-	-210	34°59'06.8"N 126°51'06.8"E	-	RNAV 1	-
003	TF	MESIL	-	052 (043.3)	11.7	-	+8 000	-250	35°07'39.2"N 127°00'55.4"E	-	RNAV 1	-
004	TF	JJ223	-	020 (011.8)	5.3	-	+9 000	-	35°12'53.6"N 127°02'15.1"E	-	RNAV 1	-
005	TF	ROYAL	-	073 (064.5)	21.1	-	+9 000	-	35°21'59.1"N 127°25'33.7"E	-	RNAV 1	-
006	TF	IGDKOK	-	073 (064.7)	21.3	-	+9 000	-	35°31'03.6"N 127°49'06.6"E	-	RNAV 1	-

## RNAV MUJIN 1 - MAKSA Transition

Serial Number	Path Descriptor	Waypoint Identifier	Fly-over	Course/Track °M(°T)	Distance (NM)	Turn direction	Altitude (ft)	Speed (kt)	Coordinates	VPA/ RDH	Navigation specification	Remarks
001	CF	MUJIN	-	22L-218 (209.9) 22R-217 (208.8)	5.5	-	-	-210	35°02'06.6"N 126°44'47.0"E	-	RNAV 1	-
002	TF	JJ221	-	128 (119.9)	6.0	-	-	-210	34°59'06.8"N 126°51'06.8"E	-	RNAV 1	-
003	TF	MESIL	-	052 (043.3)	11.7	-	+8 000	-250	35°07'39.2"N 127°00'55.4"E	-	RNAV 1	-
004	TF	JJ222	-	330 (321.8)	10.7	-	+8 000	-	35°16'04.6"N 126°52'49.4"E	-	RNAV 1	-
005	TF	MAKSA	-	013 (005.1)	14.2	-	+8 000	-	35°30'11.3"N 126°54'22.0"E	-	RNAV 1	-

Change : Information of ALT/speed restrictions for JJ224, MESIL and JJ223.

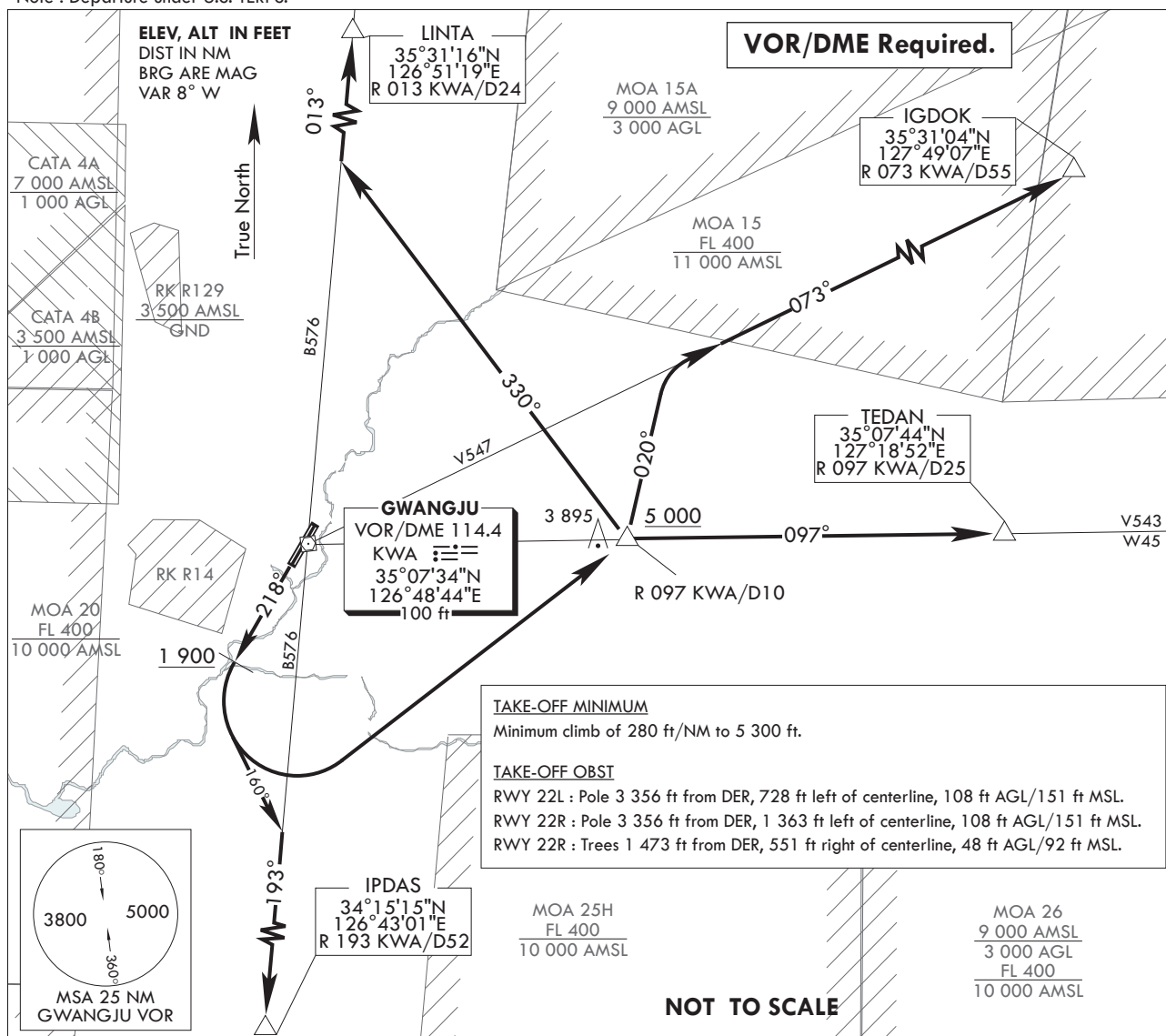
STANDARD DEPARTURE CHART  
INSTRUMENT (SID)

TRANSITION ALT 14 000  
TRANSITION LVL FL 140

GWANGJU DEP 124.0, 124.7  
347.2  
GWANGJU TWR 118.05  
254.6

GWANGJU/Gwangju(RKJJ)  
RWY 22L/R  
GWANGJU 4

Note : Departure under U.S. TERPS.



DEPARTURE ROUTE DESCRIPTION

**TAKE-OFF RWY 22L/R** : Climb HDG 218° to 1 900 ft, then.....  
..... Climb to assigned or specified altitude via (the following transition routes).

**IPDAS transition** : Left turn HDG 160° to intercept R 193 KWA and R 193 KWA to IPDAS.

**LINTA transition** : Left turn direct to R 097 KWA/D10 at or above 5 000 ft, then left turn HDG 330° to intercept R 013 KWA and R 013 KWA to LINTA.

**IGDOK transition** : Left turn direct to R 097 KWA/D10 at or above 5 000 ft, then left turn HDG 020° to intercept R 073 KWA and R 073 KWA to IGDOK.

**TEDAN transition** : Left turn direct to R 097 KWA/D10 at or above 5 000 ft, then right turn direct to TEDAN.

**INTENTIONALLY**

**LEFT**

**BLANK**



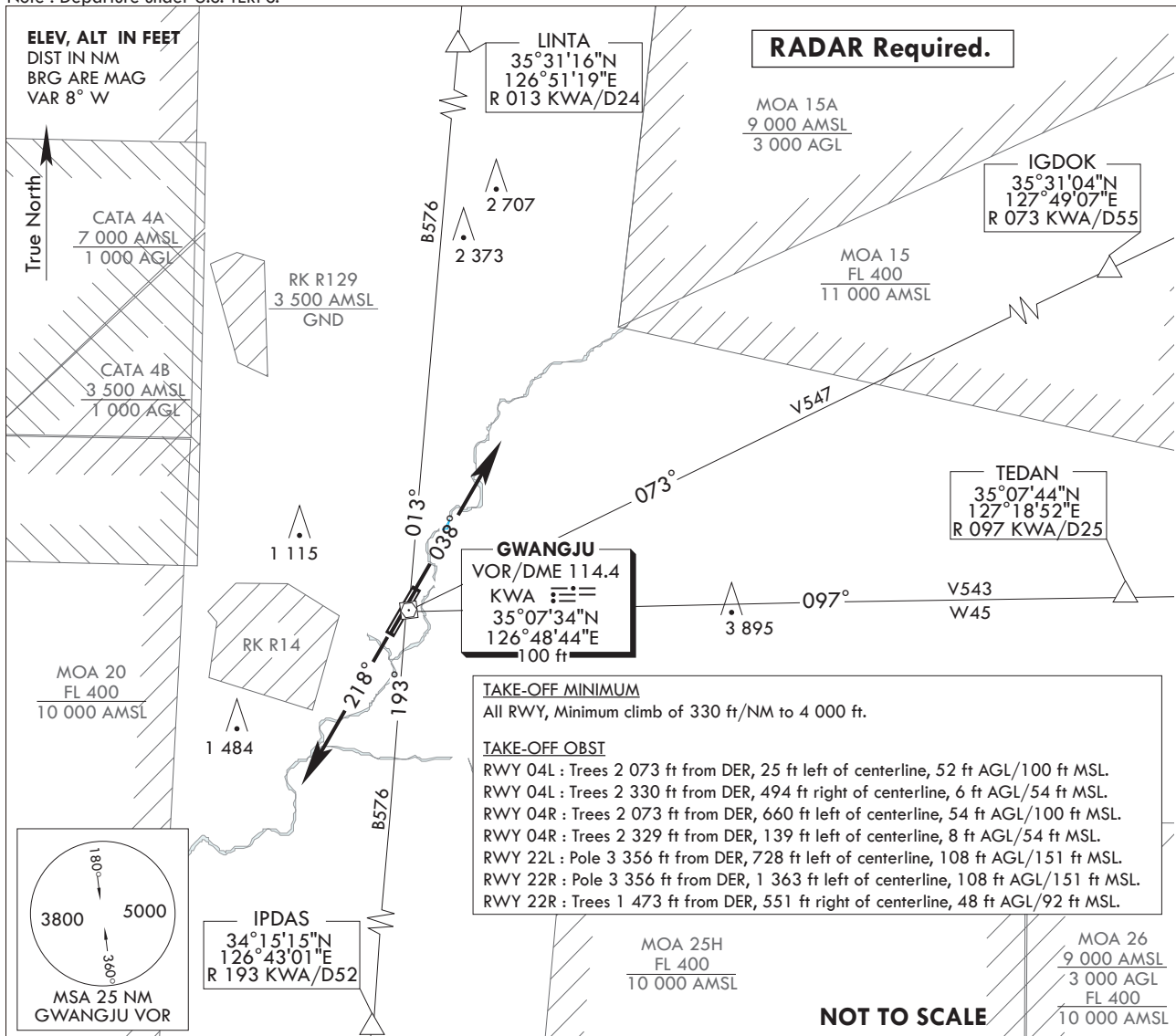
STANDARD DEPARTURE CHART  
INSTRUMENT (SID)

TRANSITION ALT 14 000  
TRANSITION LVL FL 140

GWANGJU DEP 124.0, 124.7  
347.2  
GWANGJU TWR 118.05  
254.6

GWANGJU/Gwangju(RKJJ)  
RWY 04L/R, 22L/R  
GWANGJU 5

Note : Departure under U.S. TERPS.



DEPARTURE ROUTE DESCRIPTION

TAKE-OFF RWY 04L/R : Climb HDG 038°, thence.....

TAKE-OFF RWY 22L/R : Climb HDG 218°, thence.....

..... Except radar vectors to intercept filed Enroute fix or Navaid.  
Maintain 8 000 ft or assigned altitude(flight level).  
Expect filed altitude/flight level within 10 minutes after departure.

**LOST COMMUNICATIONS** : If radio contact is not established with departure control prior to reaching 4 000 ft, continue climb to 8 000 ft before turning to filed fix/Navaid and proceed filed route and altitude.

**INTENTIONALLY**

**LEFT**

**BLANK**